



Installing the Access Engine Runtime library using Office Deployment Tool.

Three files are distributed with this README.file:

- OfficeSetup.exe. Note that this can also be downloaded from this [link](#) as shown in Figure 2 below.
- Installconfig_32.xml
- Installconfig_64.xml

Follow these steps to install the Access Runtime Library :

- Open the DOS emulator or cmd.exe as an administrator and use the command “cd” to navigate to the folder where the Installconfig.xml file and “OfficeSetup.exe” are located.
- Run the command “OfficeSetup.exe /configure Installconfig_##.xml” as shown in Figure 1, where ## is 32 or 64 bits.

If the access runtime library is installed properly, then it will show in the control panel as shown in Figure 3.

If you get an error message like the one in Figure 4, then you have on Office installed in the computer with architecture different from the one assumed in the steps above. For instance, the error in Figure 4, will be if you tried to install Access 64 bit, but there is an office 32 bits installed in the computer. In this case, proceed to install Office 32 bits, and then FAD TOOLS 32 bits.

A screenshot of a Windows Command Prompt window. The title bar reads "Command Prompt". The window content shows the following text: "Microsoft Windows [Version 10.0.19045.4412]" followed by "(c) Microsoft Corporation. All rights reserved." on the next line. The command prompt shows the current directory as "C:\Users\jblancobeltran>" and the command being entered is "OfficeSetup.exe /configure Installconfig_32.xml". The cursor is at the end of the command line.

```
Microsoft Windows [Version 10.0.19045.4412]
(c) Microsoft Corporation. All rights reserved.

C:\Users\jblancobeltran>OfficeSetup.exe /configure Installconfig_32.xml
```

Figure 1. Example of command for 32 bits Office architecture.



FADTOOLS

INTERNATIONAL

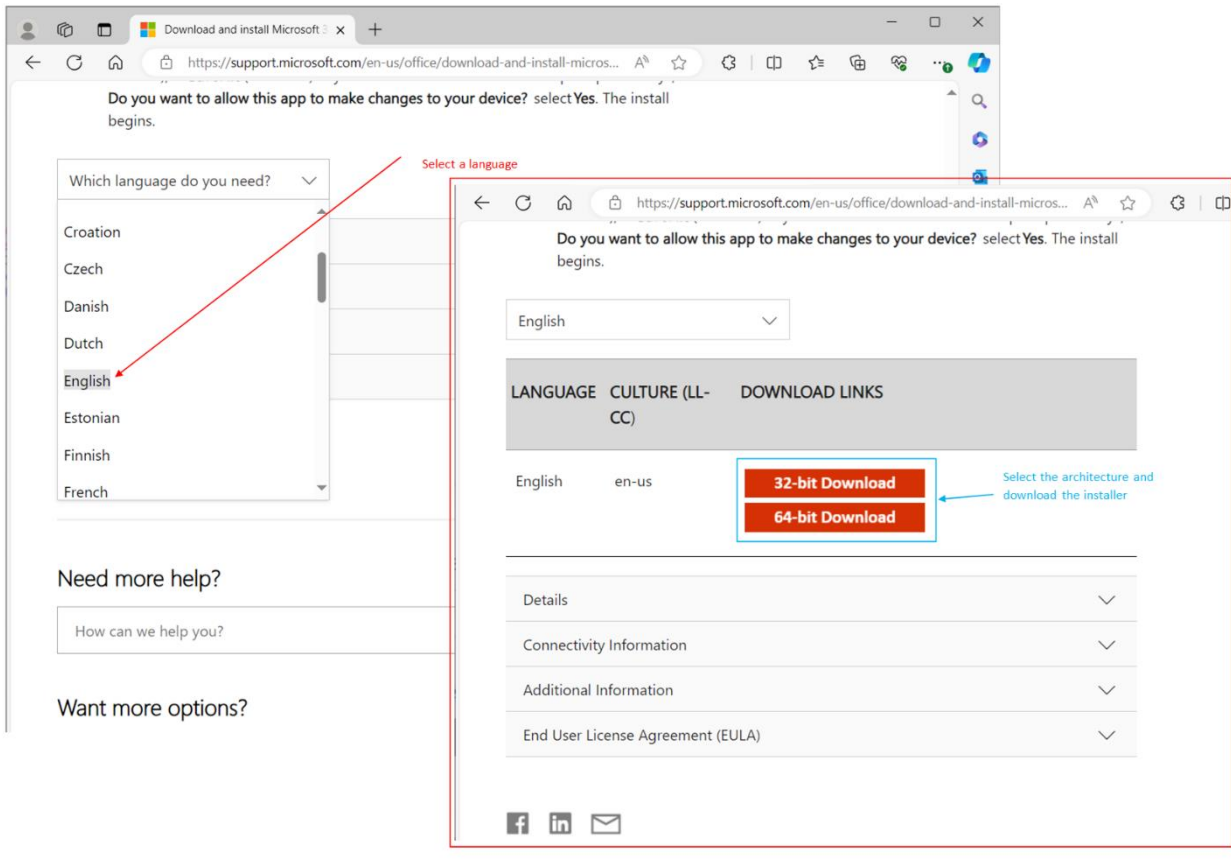


Figure 2. [Download and install Microsoft 365 Access Runtime](#)

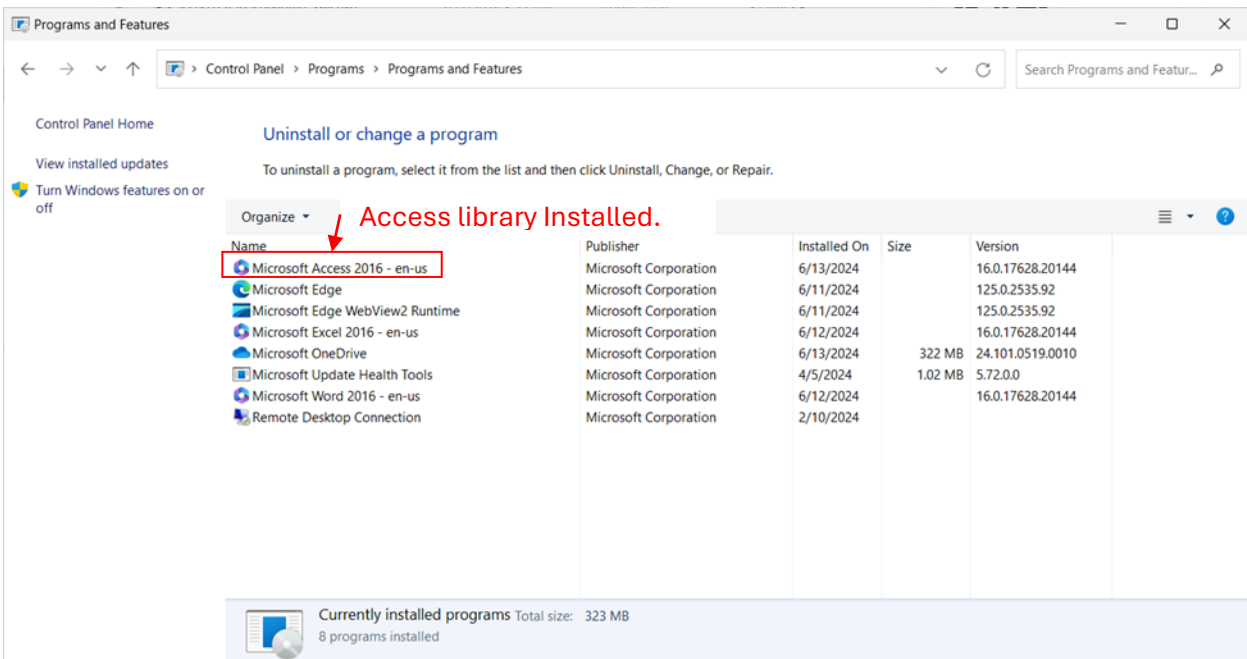


Figure 3 Checking that the Access Runtime Library is installed.



Couldn't Install Microsoft 365 and Office

This installation is for the 64-bit version of Microsoft 365 and Office, but the following 32-bit applications are already installed on this computer:

Microsoft 365 and Office

Want to install 32-bit Microsoft 365 and Office, which will work with your 32-bit applications? Select "Install 32-bit". If you want the 64-bit version, select "Cancel", uninstall your 32-bit Microsoft 365 and Office applications, and start this 64-bit installation again.

[Help: Installing 64-bit or 32-bit.](#)

Install 32-bit

Close

Figure 4. Example of the Office Deployment Tool telling you to install the other architecture.